

# THE TUB BOAT

**Newsletter of the Bude Canal & Harbour Society**

**No. 103**

**Spring 2023**



---

# THE TUB BOAT

Newsletter of the Bude Canal & Harbour Society

---

## Forthcoming Events for 2023:

Sat 8th July	200th Anniversary of the opening of the Bude Canal between Bude and Holsworthy.
Sun 16th July	Bude-Stratton Heritage Day.
Sat 22th July	Celebratory dinner at The White Hart Hotel, Holsworthy. See page 8 and enclosed booking form for further details.
Autumn	Two canal tours by minibus with lunch at the Red Post Inn.

Further details in the Summer edition of The Tub Boat.

---

Contributions for the next edition of the Tub Boat should be sent as an e-mail attachment to [editor.bchs@gmail.com](mailto:editor.bchs@gmail.com) or copied onto a USB memory stick or CD and sent to Mike Moore (Tel: 07790 744823) to reach him by 15th June 2023.

---

### Officers

Chairman	Chris Jewell
Vice-Chair	Vicki Herbert-Coulson
Secretary	Peter Daniel
Treasurer	Martin Shannon
Membership Secretary	Martin Shannon
Events Secretary	Stuart Spooner
Minuting Secretary	Vacant
The Tub Boat Editor	Mike Moore ( <i>non-trustee</i> )

### Other Trustees

Lesley Moores
Michael Coulson
Sandy Faulkner
Adrian Gannon

---

The views expressed by the contributors to this newsletter are not necessarily those of the Bude Canal & Harbour Society which does not accept responsibility for them.

---



# THE TUB BOAT

Newsletter of the Bude Canal & Harbour Society

No.103

Spring 2023

## CONTENTS

Forthcoming Events .....	2	Bude Canal on Facebook .....	13
Creaks from the Chair .....	4	Dredging .....	14
AGM Report .....	5	Bank Repairs .....	18
Treasurer's Report & Membership Report .....	5/6	Bude Flood Defence Project ..	20
Bicentenary Celebrations .....	8	Compass Point .....	21
Profile—Adrian Gannon .....	8	Exposed Sand Rails .....	23
Profile—Stuart Spooner .....	9	Bude Canal Trust Work Report .....	24
Scattering of Ashes .....	10	Bude Canal Trust Executive Report .....	25
Lucille Opie .....	11	New signs at Helebridge .....	27
Bude Canal website .....	12		

*Cover photo: Upper Pound following dredging*

## Creaks from the Chair

Our new trustee, Adrian Gannon lives in the house previously occupied by the late Audrey Wheatley and her family. Audrey was a great friend and a former trustee and chairman of BCHS. Adrian is also a member of the committee of Connect Bude who are working to bring the railway back to Bude. See Adrian's profile on page 8.

Lucille Opie, who retired as a trustee at the AGM, was born in 1929 in Redruth and was a teacher by profession. She moved to Bude in the 1950s with her husband, Ivan, and taught at Holsworthy Secondary Modern School. Lucille joined BCHS on 15 March 2004 and became a trustee on 17 December 2014. She was a good Cornish woman and a friend to many. See the article from Lucille on page 11.



*Presentation of card and flowers to Lucille on 8 March*

Our appeal for donations towards the cost of a new shed has resulted in receipts of £700 so far.

I am writing this sitting in my car overlooking Widemouth Bay with a clear blue sky and full sunshine warming me as spring begins and life moves on. I note that the planned and funded dredging between Rodds Bridge Lock and Peter Truscott's Bridge has only just started which makes it 6 weeks late.

*Chris Jewell*

## **AGM on Sunday 19<sup>th</sup> February 2023**

As usual, our AGM was held in The Gallery at The Castle Heritage Centre commencing at 10am. A display of heritage postcards was on show and some of which were taken by the Thorn family who were pioneer photographers in Bude in the late 1800's. At 11am an excellent presentation on the Rolle Canal and its development and importance was given by Mr Ian Harrison, Chairman of the Rolle Canal & Northern Devon Waterways Society. This was well received by the members present and at 1pm we all enjoyed a buffet lunch provided by Café Limelight.

The formal AGM commenced at 2.30pm with an attendance of 20 members and proceeded according to the agenda. Two trustees were re-elected (myself and Sandy Faulkner) and a new trustee (Adrian Gannon) was nominated and elected. This was followed by a lively question session about the canal and harbour covering the responsibilities of Cornwall Council as owners of the Barge Section of the canal.

The trustees agreed to put the concerns raised to Charlotte Evans, Countryside Officer, Cornwall Council and ask for an update on the following topics –

- a. Dredging Middle pound (and indeed the timetable for the other dredging)
- b. Works on the Sand railway ramp
- c. Life of Sea Lock gates and their replacement
- d. Inoperable sluice gate on one of the Sea Lock gates
- e. Remedial works to lower gates on inland locks
- f. Collapsed banks above Falcon Bridge
- g. Long-term asset maintenance plan
- h. Negotiations with Environment Agency over Breakwater
- i. Further repairs to Tommy's pit

The meeting closed at 3.30pm

*Chris Jewell*

## **Treasurer's Report for 1<sup>st</sup> January – 31<sup>st</sup> December 2022**

A summary of the annual financial statements of the society, which have been independently examined by Leonard & Co is reproduced overleaf.

<b>ACCOUNT 1</b>	£
Balance as at 1 January 2023	2,228.43
<b>Add Income</b>	2,959.77
<b>Less Expenditure</b>	<u>(2,324.41)</u>
Balance as at 31 December 2022	2,863.79
Add Cash in hand	<u>88.00</u>
Total of Funds available for Account 1 on 31 December 2022	<u><u>2,951.79</u></u>
 <b>ACCOUNT 2 - EDUCATIONAL FUND</b>	£
Balance as at 1 January 2022	666.24
<b>Add Income</b>	247.98
<b>Less Expenditure</b>	<u>(180.00)</u>
Balance as at 31 December 2022	<u><u>734.22</u></u>
 <b>ACCOUNT 3 - PROJECT FUND</b>	£
Balance as at 1 January 2022	4,628.60
<b>Add Income</b>	178.11
<b>Less Expenditure</b>	<u>0.00</u>
Balance as at 31 December 2022	<u><u>4,806.71</u></u>
 <b>ACCOUNT 4 - COMMEMORATIVE EVENTS</b>	£
Balance as at 1 January 2022	1,450.98
<b>Add Income</b>	2.52
<b>Less Expenditure</b>	<u>(0.00)</u>
Balance as at 31 December 2022	<u><u>1,453.50</u></u>
 <b>ACCOUNT 5 - ARCHIVE PROJECT</b>	£
Balance as at 1 January 2022	379.51
<b>Add Income</b>	0.00
<b>Less Expenditure</b>	<u>(97.95)</u>
Balance as at 31 December 2022	<u><u>281.56</u></u>

The notable points to report are as follows:

1. The main elements of income for the year were membership subscriptions and donations, with accompanying Gift Aid, supplemented by publication sales largely at Barge Workshop Days and Bude Heritage Day.
2. The key areas of expenditure were as follows:
  - a. The production and distribution of the quarterly newsletter "The Tub Boat"
  - b. Web site updating
  - c. Annual public liability insurance
  - d. Storage costs
  - e. Cost of publications printing

The magnitude of these expenses is in line with previous years and expectations although it should be noted that newsletter printing costs for the year include 5 editions due to the timing of payments and reflect an inflationary increase.

3. The Project Fund includes £4,500 designated for future works.

### **Membership Report**

	Number
Paid Membership 31 <sup>st</sup> December 2022	
Life Members	27
Annual Members	76
	<hr style="width: 100%; border: 0.5px solid black;"/>
	103
Additional family members	8
	<hr style="width: 100%; border: 0.5px solid black;"/>
Total members	<u>111</u>

We are extremely grateful to have received the continuing support of the majority of our membership including some generous donations. We would like to thank all donors but make particular mention of those who gave to the society in memory of Audrey Wheatley.

The number of Life Members is unchanged, but the number of Annual Members has fallen slightly from 80 at the end of 2021.

Thank you all for your continued support and please let me know if your contact details change or if indeed your circumstances change such that you are able to make future subscriptions under Gift Aid.

*Martin Shannon, Honorary Treasurer and Membership Secretary*

## **Bicentenary 1823 - 2023**

On 8 July this year, it will be 200 years since trade on the Bude Canal started between Bude and Holsworthy. We are planning events during the year to celebrate this important achievement. In particular, there will be a celebration at the White Hart Hotel in Holsworthy commencing at 7pm on Saturday 22 July with a carvery, presentations to Bude Stratton Town Council and Holsworthy Town Council followed by entertainment. This is a “ticket only” event at a cost of £20.00 per person including tea or coffee. A vegetarian option is also available. If you wish to come, please complete the enclosed booking form but there is a maximum of 45 tickets available with a minimum of 30 required to run the event. Please return the form to the address shown with your payment by 1 June 2023.

*Chris Jewell*

## **Introduction from new Trustee, Adrian Gannon**

I was born in Christchurch, Dorset but most of my childhood was spent in the Thames Valley. I graduated from Oxford in Electrical & Electronic Engineering and have subsequently worked in the nuclear industry for the past 42 years. I retired from AWE in 2020 as Head of Engineering and I am currently a technical consultant working for the Government.

I have always had a keen interest in canals and spent much of my 20’s, 30’s and 40’s restoring canals with the Newbury Working Party Group (NWPG), a canal restoration group affiliated with the IWA and WRG.



I’ve contributed to the restoration and opening of both the Basingstoke Canal in Hampshire and the Kennet and Avon Canal, where many of the footbridges on the Caen Hill Flight at Devizes were built by our group. We even attended a one-off work party on the Bude Canal in the 1980’s. I met my wife whilst restoring the Basingstoke Canal and canals have been the focus of much of our leisure time ever since.



My parents-in-law moved to Bude in the mid-eighties, and we married here in 1989. Our first house was in Flexbury, but in 2018 we moved to Lower Upton, just up from Rodd's Bridge, and now have the canal on our doorstep. I retired in 2020 and made the permanent move to Bude. Transport, engineering, and travel are my main hobbies. I have a real interest in trains and am part of the group campaigning to return the railway to Bude. I enjoy walking and can be found daily on the towpath exercising my Miniature Schnauzer dog, inspecting locks and bridges as I go!

*Adrian Gannon*

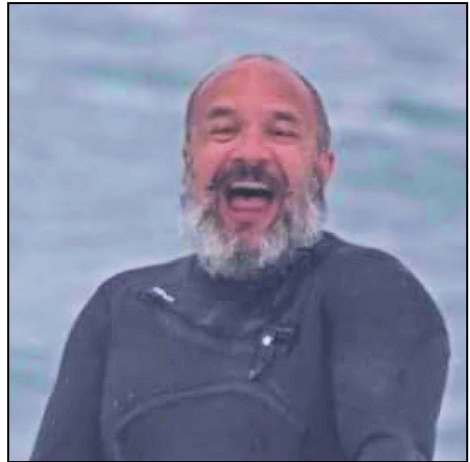
## **Stuart Spooner - Trustee**

About me - I have been lucky enough to live in Poundstock, Bude now for 14 years making the jump to live here with my family after a wonderful summer holiday back in 2008. To touch briefly on my career, following my Army service I have had some very busy roles culminating in a very senior role for a major multinational consultancy that took me all over the world to some truly amazing places (and some not so amazing) but Bude has always been the place to come home to.

Fortunately, I am now taking things a little bit easier as managing director of my own management consultancy based in Bude and failing miserably at being semi-retired (again!) and am now in my second year supporting the Bude Canal and Harbour Society as a trustee.

So why be a trustee for BCHS?

As a very keen all year surfer the harbour is extremely close to my heart. It not only offers vital flood protection for our town but also provides a sanctuary to feed the surf addiction in some truly awful conditions that the North Atlantic can serve up. Couple this to the unspoilt canal and wetlands that became so important to us all during the pandemic lockdown when the trustee position came up, I didn't think twice. We are so fortunate to have these areas available to us as a town that it felt right to support the society when and where I can.



The canal and harbour areas not only provide access to get out in our beautiful open spaces for all abilities but also bring in vital tourism to the town without which Bude would be a very different place indeed. They need our support and protection as does our history; it is after all what made Bude.

*Stuart Spooner*

Stuart's father-in-law, John Lee, passed away late last year and following a request from the family permission was given for his ashes to be scattered on the canal near Rodds Bridge. The following contribution was submitted by John's wife, Rosemary.

*Mike Moore*

### **Scattering of Ashes**

John, a life-long walker and climber, moved to Bude with his wife in 2012 to be near their family. He enjoyed walks along the Southwest Coastal Path as well as what he called 'his 4k canal circuit'. As his last illness prevented him from doing much walking at all, he found his relaxation in strolling from Helebridge car park to the fish race, following it up with a coffee at the local café.

When John died in November 2022, his family had to consider where his ashes could be scattered that would please him. We think this photograph answers our question; there could be no other place.

John's family would like to thank the BCHS Committee for responding so quickly to their email request about whether the scattering of ashes was allowed by the canal and for their very positive response. They made the process so easy for us.



*Rosemary Lee*

## **Lucille Opie**

I came to Bude to live in 1952 when my husband got a teaching post at Stratton Secondary School. As a teacher and having a great interest in history, I remembered my first visit to the canal very clearly. It was after WW2, in 1947 when petrol was again available for private cars that I came with my family for a Sunday outing and enjoyed walking along the path beside the Bude Canal.

My father was very interested in the canal because he had heard that it was unique as it opened directly to the sea! When building commenced it was to carry sand inland in order to enrich the soil for farmers to grow their crops. They also intended to carry it right across Cornwall to the south coast to enable freight to go across the English Channel to Europe. Unfortunately, within less than 100 years the railway came and could carry freight across the country much cheaper and so the building went no further than Holsworthy in the east and near Launceston to the south. Thus, it was left to deteriorate though the towpath was used by Marhamchurch residents to get into Bude by foot.

When North Cornwall District Council, who owned the canal, applied for lottery funding to repair, and update it in 2003, I joined the Bude Canal Regeneration Advisory Committee chaired by NDC Councillor Neil Burden. The Council was given funding to repair and maintain the canal and harbourside which had to have retail shops beside it to bring money into the community so when I retired in 2014, I volunteered as a Trustee of the Bude Canal and Harbour Society.

The society meet regularly and get funding to popularise the canal by selling memorabilia and encouraging the schools to do projects in history. It is important the young people learn of its importance and respect it because there is then less damage caused by youthful playing! One could say our canal is responsible for Bude's bread and butter as many visitors holiday at Bude in order to visit the unique canal, unique because it opens to the sea.

However, as a nonagenarian I feel it is now time to bow out and allow my place to be taken by a younger person.

I wish them well.

*Lucille Opie*

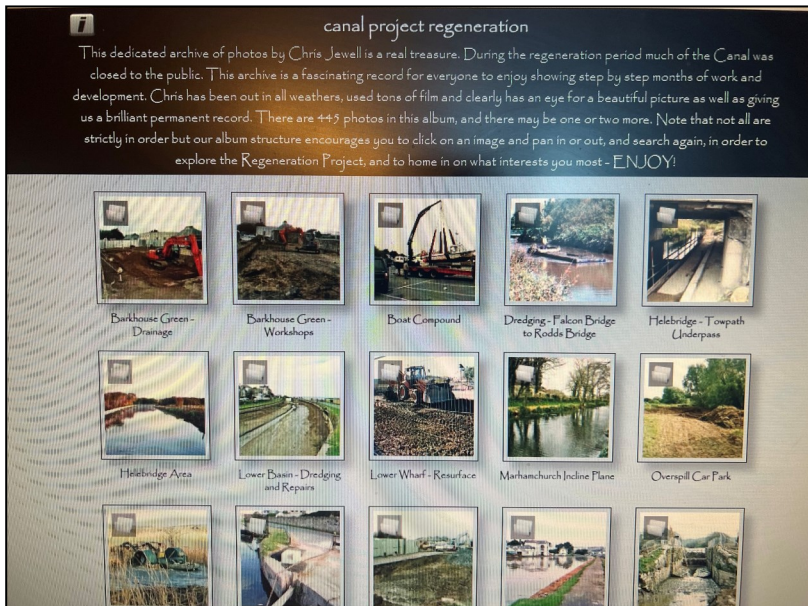
## The Bude Canal website

The response you give is everything! And quick responsiveness from a website, together with effectiveness across all devices at all orientations is vital these days.

The [www.bude-canal.co.uk](http://www.bude-canal.co.uk) website was redesigned some time back to ensure that it is fully responsive on all devices in landscape and portrait orientations. Given the detail available on the site this has not exactly been straightforward, but it was vital to make sure the depth of information was retained. Many sites have actually reduced the information available as they redesign but BCHS wanted to retain the resource they have built over the last twenty odd years and you will agree things have changed out of all recognition during that time.

Consistently one of the most visited sections of the site is the 1904 Maps. For those who haven't yet explored this area of the site it includes eight maps together with introductions and relevant surveyor's notes. It is fascinating.

Another popular area is the photographic archive of the Regeneration Project with over 445 photos scanned from Chris Jewell's dedicated daily walks recording all the action. These are put into separate albums for easy searching (see below).



More recently the 18 A2 panels for the Bicentenary were scanned for the site and we will continue to add more resources as we can. The Tub Boat – of which there are over 80 editions available – appears regularly on the site but a recent decision means that members will receive their copies a month or two before it is made available to the general public via the website.

It is a continuous work in progress and obviously this year which sees celebrations for the 200<sup>th</sup> Anniversary of the start of trade between Bude and Holsworthy will present more opportunities for exciting content.

*Jacki*

## The Bude Canal on Facebook

The time has come ..... said the Walrus. Haven't yet seen a walrus in the vicinity of the Bude Canal but the variety of wildlife is quite astounding and many walkers and visitors make great discoveries. With smartphones so popular and everyone connected the time has come for BCHS to start a Facebook presence and invite exciting new content from friends and visitors alike.

So – very early days, in fact you may not even find our page easily yet, but please look for “Bude Canal” or click on our website link. Please like, share and contribute – you know the drill.



It's a real learning game for us but please upload content to generate and expand interest and add your photos and comments on all aspects of the Canal. This might include photos taken on a walk, historical pictures, images of wildlife, canal activities and families enjoying this fantastic resource, boats locking in and out and of course our fantastic sunsets. Please help us bring this new venture to life and email us with comments or suggestions.

*Jacki*

## **Bude Canal Dredging Programme update from Cornwall Council**

Ahead of a public meeting scheduled for 12 January 2023, we're updating stakeholders and the community about some changes to the timeline for dredging the Bude canal. Dredging of one section of the Bude canal to the south of Truscott's Bridge will begin as planned.

The start date for dredging the commercial lower zones of the canal has been rescheduled for later in the year to mitigate against any possibility of these major works affecting the town during the busy Easter holiday period. Dredging the lower zones close to the town will have an inevitable impact and we are constantly reviewing our methods and programme to mitigate and reduce those impacts. Additionally, there are ecological constraints in the canal to consider. Taking all these factors into account, the window for completing all the dredging work this side of Easter is small.

For these practical reasons, dredging in the lower zones will now start when temperatures drop again later in the year, which is a constraint due to the presence of invasive non-native zebra mussel in the lower sections and is part of our environmental consent.

*Cornwall Council, 11 Jan 2023*

## **Public Meeting on the Dredging Programme**

At the public meeting on 12 January 2023, the anticipated timeline for the project was presented as outlined in the following extract of the official record of the meeting as produced by Cornwall Council.

*There is only a short working window for dredging operations on the canal given the need to avoid disruption in the busy holiday season and the constraints of ecology. This is between c. October and March, depending on weather conditions.*

*The meeting heard that, although every effort has been made to deliver these complex works along the full extent before the holiday season this year, the programme has been reformatted to avoid the risk that the busiest areas on the lower zones will run over into the Easter period. The reformatted programme will see dredging upstream of Truscott's Bridge this season, expected to be complete by end April 23, with a return to complete the lower sections later in the year, when temperatures drop in the autumn/winter, which is part of the ecological mitigation required.*



*Dredged Upper Pound from Whalesborough Accommodation Bridge*



*Dredged Upper Pound looking towards Whalesborough Lock*

*Silt from the lower sections will be temporarily stored in the carpark areas beside the canal, hence the strong need to limit the risk that these areas will still be impacted into the holiday season.*

*The full scheme is still expected to complete by the end of the 23/24 financial year.*

Following the meeting it was announced that dredging between Peter Truscott's Bridge and Rodds Bridge would commence on 23 January but, unfortunately it did not start on this date as planned. We have now received a further update from Cornwall Council - see below.

*Mike Moore*

### **Bude Canal Dredging - latest update from Cornwall Council**

Many readers will already be aware that Cornwall Council has commenced dredging the canal after successfully securing funding to proceed with this complex and high-cost operation. Dredging the canal comes with its challenges including lack of available bank-side land, protected species and invasive species, all impacting the range of methods available. As such, we are taking every care to plan and find the best ways of to successfully complete the task.

The reasons for dredging the canal are important to Bude's identity and resilience, including, to reinstate a safe navigable depth for watercraft, to restore the role of the canal in carrying flood waters as part of the flood defence strategy for Bude, and to help buffer the impacts of climate change, such as the low water levels experienced in the drought of 2022.

In January, we held a public meeting relaying the plans to focus on the upper sections of the canal before this year's summer season, and return again in the autumn/winter to commence the more complicated and larger-scale operation in the lower zones. The update on this position is that dredging in the stretch upstream of County Road (Rodds Bridge) will commence during March and is anticipated to take about a week to a fortnight, with minimal disruption to canal and tow path users, as the canal will be accessed via the privately owned field.

This will be carried out by long-reach excavator operating on the right (north) bank, and the silt will be mounded on the existing high embankment. The operation is being overseen by ecologists, including a water-vole specialist, and we are confident that it should go smoothly, particularly following-on from the success of the operation where this method was used at Whalesborough before Christmas.



We should, however, also note that this is only a small stretch in comparison to the overall aim to dredge the whole canal and that we are still developing a revised programme for the lower zones from County Road (Rodds Bridge) to the end of the canal. At the moment we anticipate the remaining works will take place after the summer season, undertaking this all in one go so as to reduce impact on users and to keep costs effective.

As we know so many of you are, we are committed to the full scheme and will continue to keep stakeholders updated as further information becomes available.

For further information and updates please see: <https://letstalk.cornwall.gov.uk/bude-canal-and-harbour>

*Charlotte Evans, Countryside Officer, Cornwall Council*

### **Dredging Programme report from Cllr Peter La Broy**

The dredged sediment at Whalesborough is settling into the embankment well and starting to revegetate. Following the success of this operation, a further approx. 120 meters just upstream of County Road (Rodds Bridge) will be excavated using the same method (long reach excavator) before the end of March, with the contractor booked to undertake the operation next week, commencing Tuesday 21st.

*ED – Work started on the 21<sup>st</sup> as planned. See photo below.*



This will leave the zones down stream of County Road (Rodds Bridge) to complete and having made the difficult, but right, decision to seek alternative sub-contractors for this challenging and high-profile operation, CORMAC will be retendering for the works this spring, with the view to commencing the works in October/November, to complete by the end of the 23/24 Financial Year.

### **Drought conditions**

As is typical across the County, the Strat and Neet catchments have not experienced the usual levels of recharge over the winter and so we are mindful that the system may well experience low levels again this summer. Cornwall Council and the EA have met on site twice this year to look at options for mitigating against the impacts of dry conditions. One outcome is that we are looking to reinstate the by-pass culvert beside the weir at Whalesborough, as this will take flow down into the river system at lower levels.

Due to the needs of the river system for flow, there is no option to vary our abstraction licence for the canal to take flow at lower levels. If we are unable to abstract for a long period of time, we may need to move fish and are looking at other ways we can mitigate the impact of drought. We hope that the deeper zones that have already been dredged will be more resilient, though the extent to which the canal is impacted will once again largely depend on the weather conditions we experience.

We are planning a stakeholder meeting in May to discuss these issues and maintenance schemes and will forward a date soon.

*Cllr Peter La Broy, 19 March 2023*

### **Bude Canal - bank repairs**

We are aware that there is bound to be community interest in the plans for the canal, and as such are committed to providing updates about how we are managing this important asset.

Deterioration to the embankment beside the Crescent Carpark was a result of the low water levels in the canal experienced in the summer 2022 drought. These were unexpected, and although the Countryside Team were preparing a minor scheme of bank repairs for eroded points further up the canal, there was no funding allocated to the canal of the scale needed to implement the major repairs. Immediately following the erosion our engineers assessed the conditions.

A safety barrier and temporary launch area were put in place to keep people safe and limit further deterioration at the most vulnerable points.

Between September and November, ground investigations were completed, and a costed options appraisal of various solutions was produced by the engineering design team. This report was received by Cornwall Council in early December 2022, with the recommendation to install a sheet piling solution. There have been discussions with the EA and we understand that they would not object to this solution. The forecast budget required for the implementation of these works would be around £500,000.00.



Since December, we have been working hard to secure the funds and have recently had confirmation that there is a commitment to finding them within the capital programme. We have proceeded with honing the design and preparing to apply for planning permission on that basis.

The anticipated programme of works shows mobilisation in weeks 25 to 30, which aligns with construction starting in mid-September this year. The main risks to this programme being extended are the planning permission process, materials supply, and environmental consenting. Additionally, it is likely that it will overlap with the canal dredging programme, hence if any complication around site work arises because of this, the timeline may be adjusted slightly. Once on-site, we anticipate that the construction phase will take between 10 and 13 weeks, meaning that if the programme continues with no delays, the repairs could be completed by mid-December 2023.

Given the complexities of the canal, including the ecology and historic nature of the perched channel, I would suggest that it would be realistic to include a contingency in those programme dates, and recommend that the message relayed is that works will take place over the 23/24 winter season. Indeed, a later start may be more palatable for the activity providers and businesses, hence have mutual benefits.

*Cllr Peter La Broy, 19 March 2023*

## **Bude Flood Defence and River Restoration Project**

The Bude flood defence and river restoration scheme is a £2.1 million scheme to improve the existing flood alleviation scheme and restore the ecological potential of the River Neet between Whalesborough Weir and Pethericks Mill Nature Reserve. Full details were published on page 18 of Tub Boat no.101 with an update on page 17 of Tub Boat no.102.

Mike Moore

## **March update from The Environment Agency**

The final work on improvements to the embankment behind the Tourist Information Centre have started, which should take around five weeks to complete.



*Removing topsoil to strengthen and rebuild bank which will be topped with wildflower seeds which will need protecting until the flowers are established*

We worked with Cornwall Wildlife Trust to find a relocation site for slow worms present along Ergue Gaberic Way. We were then able to clear vegetation from the area, and from mid April, will maintain those conditions with regular trimming. The embankment will be replanted after construction is complete.

Our planning submission for 'renewal of flood defence to include the construction of a flood defence wall and reinforcement and re planting of existing embankment and installation of Stop Log to Nanny Moore's Bridge' was approved in September 2022.

Our timescales have been revised, ensuring that we avoid the busy summer holiday season, and to avoid possible effects on bats and their roosts. We will start work on excavating Ergue Gaberic Way in early September, which means there will be some road closures. We will keep you informed on the exact dates for these.

Nanny Moore's Bridge will be closed for eight weeks while this work takes place. We will provide clear signage around the area for alternative routes.

The design for the river restoration work is being finalised and we will engage with the landowners on this soon.

You can keep up to date with the latest progress at

<http://bit.ly/BudeScheme>

*Katy McCarthy, Environment Agency*

### **Compass Point update from Bude-Stratton Town Council**

BSTC has approved the process for the appointment of a contractor to move the Storm Tower and has resolved to meet the gap in funding to complete the project, should it be needed. The tender process for the Storm Tower relocation project closed recently, with a total of five bids received for the work. Three of these were ruled out on account of cost and project delivery timescales, but two are still in the mix and are considered viable by the project team. Interviews will take place with these two experienced contractors on Monday, 6 March. The BSTC interview team includes the project's quantity surveyor, structural engineer as well as BSTC officers, and it will be looking at the quality and deliverability of the bids as well as cost.

As anticipated, there is a funding gap for completion of the project, of between £46,000 and £60,000. The project team has approached the National Lottery Heritage Fund for additional support, and while the team is hopeful further funding could be forthcoming, a decision on extra Lottery support is unlikely to take place before mid-April.

However, if the relocation of the Storm Tower is to take place this year, a contractor needs to be appointed within the next two weeks, so to allow the project to continue on track, BSTC agreed at last night's Full Council meeting to meet the funding gap – although it is very much hoped that funding shortfall will be significantly reduced by further Lottery contributions.

*Issued by Bude-Stratton Town Council on 3 March 2023*

## **Further Compass Point update from Bude-Stratton Town Council**

BSTC is very pleased to confirm it has appointed the contractor for the Compass Point Project, and work to relocate the Storm Tower is scheduled to start on 24 April 2023. The work will be undertaken by Sally Strachey Historic Conservation. Sally Strachey is based near Wincanton in Somerset and has an excellent reputation in the conservation of historic buildings. It has recently completed the £3.1m restoration of the National Trust's Wellington Monument, a Grade II\* listed 175-ft high triangular obelisk on the Blackdown Hills.

In addition to the physical re-siting of the Storm Tower, the project includes an exciting activity and educational programme for the community and there will be much more to follow on this over the coming months. The Compass Point Project is being funded by a £250k grant from The National Lottery Heritage Fund, £50k from Cornwall Council, £40k from BSTC – plus £60k as a result of a fantastic community crowdfunding effort. There is an anticipated funding gap of £46k and BSTC is in the process of applying for additional support from The National Lottery Heritage Fund.

Lead Cllr for the Compass Point Project, Cllr Peter La Broy said: “At the very first meeting about five years ago when we started to talk about saving our Storm Tower, there was serious doubt expressed that we could even get the project going. “The single biggest thing that made it viable was the Crowdfunder. You – the community – smashed our targets and gave £60,000 to help us save our landmark, which gave us the tools to unlock further funding from Cornwall Council and The National Lottery Heritage Fund.

“There have been many challenges along the way – and often the project felt like it might be too much. To get to the point where we would have contractors on board and ready to start seemed at times unimaginable.

“We are incredibly grateful to everyone who has worked on this project, and special thanks must go to Frankie, BSTC Project and Strategy Manager, for her tireless efforts. But we are most grateful to the people that put their hand in their pocket and gave some money. It is only because of you that we are able to now save the Storm Tower. Thank you!”

*Issued by Bude-Stratton Town Council on 17 March 2023*



*Remains of the Sand Railway  
uncovered on Summerleaze Beach  
at the end of December*

*Photos: Jeff Dover*

## Bude Canal Trust Work Report on the Bude Aqueduct

### 4<sup>th</sup> February

The volunteers were finally back in action this week after a break for Christmas and the New Year.

This was then followed by a couple of weeks of enforced inactivity due to bad weather with yellow warnings from the Met Office. Many piles of brash between Virworthy and Cape Horn were burnt. The damp condition of the brash made for a slow smoky start, but eventually the strong wind helped to make a fine blaze.



### 9<sup>th</sup> February

The working party volunteers were back in action this week between Cape Horn and Wooda bridge.

A section of the canal bed was cleared of dead and overhanging branches to open up the view and to encourage the wildlife to this tranquil part of the canal. Hopefully, when it dries out in the Spring the new growth will attract the butterflies, dragon flies, moths, and other insects.





## 16<sup>th</sup> February

This week the volunteers were back on the Vealand section burning up the brash that was left after trimming back the far side of the canal bank last year. About a quarter of the stacks were burnt today, so there are a few more weeks' work of burning before we get to the filter beds.



## 24<sup>th</sup> February

More of the same for the volunteers on the Vealand section this week. Good progress was made despite the wet wood and thick smoke. Hopefully we will clear up to the filter beds with a couple more sessions. During the lunch break we had a late Christmas party when an old box of crackers was unearthed.



*From information published on The Bude Canal Trust Facebook Page.*

## Bude Canal Trust – Executive Report

**Work Party update** – The work party continues to undertake improvement and maintenance works on the towpath/public footpath on behalf of Devon County Council under their Parish Paths Partnership scheme, as well as undertaking maintenance of the canal profile and features as necessary. For further details see previous report opposite and above.

**Bude Canal Aqueduct land transfer to DWT** - All parties remain committed to this, but progress is currently very slow because of legal and administrative issues that have arisen. There is, however, no concern that all matters will be resolved, and the land will be transferred appropriately in due course.

**Coast to Coast Route and the Planekeepers' Path** - The Tamar coast to coast walking route also continues to progress. The route is to be called the *Tamara Coast to Coast Way*; as a recap, it will run from the Tamar Estuary at Cremyll, opposite Plymouth, to Morwenstow via the Devon/Cornwall border at Marsland Mouth. It will be partly on the Devon side of the Tamar and partly on the Cornwall side, depending on the best option for views or suitable footpaths or other walking routes. However, for much of the length on the Devon side there will also be an alternative option on the Cornwall side to enable those who wish to complete a circuit of Cornwall, in conjunction with the Coast Path, to stay in Cornwall as much as possible. This option is to be called the *Kylgh Kernow* (circuit of Cornwall in Cornish).

As far as the canal is concerned, this route will meet the canal at Druyton Wharf, the southern end of the Launceston branch, and follow minor roads northward. It may be that in time an off-road route on the canal will become possible, but not immediately. It will follow the towpath from Moreton Bridge to Lower Tamar Lake but unfortunately it has now been confirmed that it will not be possible to re-open the Planekeepers' Path at Hobbacott for the route to follow. It will use the shorter length of Planekeepers' Path towpath at Cann Orchard, however. In addition, there are links from the main through route to nearby locations offering facilities, accommodation and public transport, and one of these links will run from the main path east of Marhamchurch down the inclined plane and along the canal into Bude.

The originally suggested opening in spring is now likely to be delayed slightly. There are two reasons for this - the first is that the funders hope to arrange a public and formal opening and arrangements for this and, possibly, for a public name to perform the opening, are taking time. There is no information about where such an event will take place but as funding largely comes from the AONB at the southern end it is likely it will be down there somewhere.

The second reason for the delay is that the original idea for the guide to the walk to be online has been changed and it is now intended to produce the guide in book form. This has introduced design issues which are currently being looked at.

*Steve Church, Chairman, Bude Canal Trust*



*New signs recently erected at Helebridge and Whalesborough*

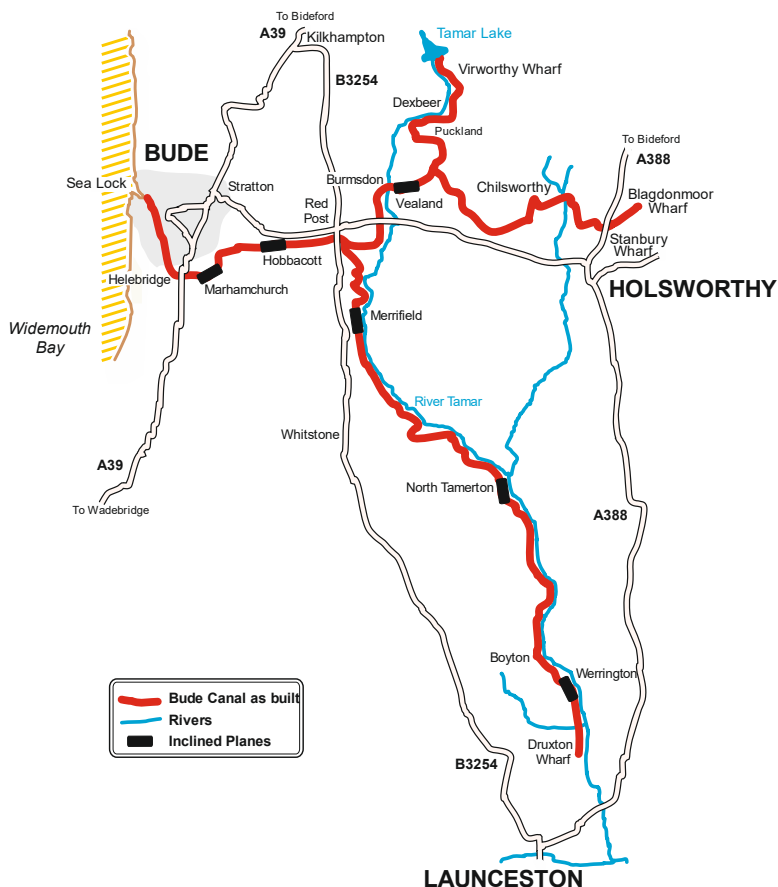


---

# THE TUB BOAT

Newsletter of the Bude Canal & Harbour Society

---



---

Published by **BUDE CANAL & HARBOUR SOCIETY**

Enquiries to the Hon. Secretary (Tel 01288 341653)

New Inn House, Week St. Mary, Cornwall EX22 6UZ

[www.bude-canal.co.uk](http://www.bude-canal.co.uk) · [info@bude-canal.co.uk](mailto:info@bude-canal.co.uk)

Registered Charity Number 1086646

Printed by Parish Magazine Printing 01288 341617

---